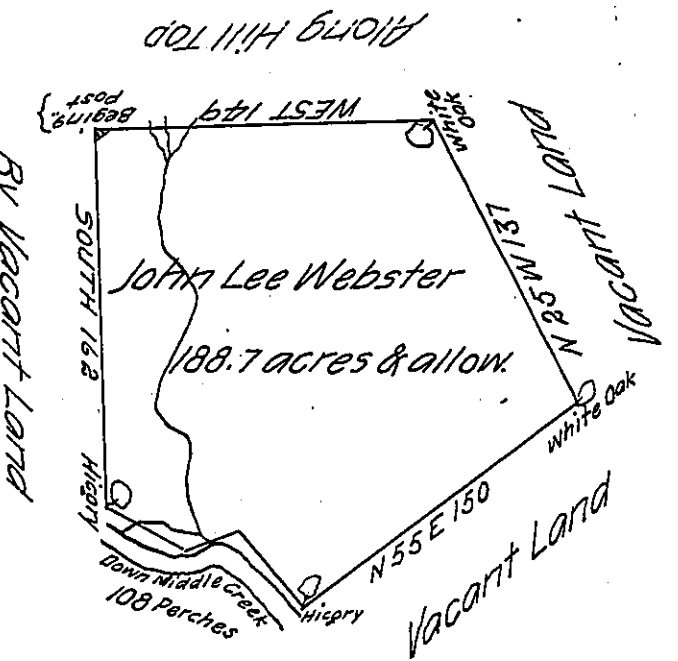


Courses down Middle Creek
 S 63 E 40
 N 75 E 24
 535 E 44
 108



The draught of a tract of land called Websters beginning situate on Middle Creek in the County of Cumberland containing one hundred eighty eight ^{acres} and one hundred and twenty perches with the usual allowance of six acres per cent for roads. Survey'd the 14th of October Anno Domini 1766 in pursuance of a warrant to John Lee Webster from the Honble the Proprietaries bearing date at Philad^a the 1st day of August Anno Domini 1766

To John Lukens Esq^r Surv^r Gen^l of the Province of Pennsylvania

P^r W^m MacLay Dept^y Surv^r

now Northumberland Co

IN TESTIMONY that the above is a copy of the original remaining on file in the Department of Internal Affairs of Pennsylvania, made conformably to an Act of Assembly approved the 16th day of February, 1833, I have hereunto set my Hand and caused the Seal of said Department to be affixed at Harrisburg, this first day of May 1907

Isaac B. Brown
 Secretary of Internal Affairs.